



CONTRACT NO: HK/2015/01

WANCHAI DEVELOPMENT PHASE II AND CENTRAL  
WANCHAI BYPASS  
SAMPLING, FIELD MEASUREMENT AND TESTING WORK  
(STAGE 3)

ENVIRONMENTAL PERMIT NO. EP-376/2009,  
FURTHER ENVIRONMENTAL PERMITS NO. FEP-01/376/2009  
AND FEP-02/376/2009

MONTHLY ENVIRONMENTAL MONITORING & AUDIT REPORT

- JULY 2019 -

**CLIENTS:**

Civil Engineering and Development  
Department

**PREPARED BY:**

Lam Geotechnics Limited

11/F Centre Point  
181-185 Gloucester Road,  
Wanchai, H.K.

Telephone: (852) 2882-3939  
Facsimile: (852) 2882-3331  
E-mail: [info@lamenviro.com](mailto:info@lamenviro.com)  
Website: <http://www.lamenviro.com>

**CERTIFIED BY:**

Raymond Dai  
Environmental Team Leader

**DATE:**

12 August 2019

Ref.: AACWBIECEM00\_0\_11547L.19

12 August 2019

AECOM Asia Company Limited  
11/F Tower 2 Grand Central Plaza  
138 Shatin Rural Committee Road  
Shatin New Territories  
Hong Kong

By Post and Fax (2691 2649)

Attention: Mr. Conrad Ng

Dear Mr. Ng,

**Re: Wan Chai Development Phase II - Central-Wan Chai Bypass  
Monthly Environmental Monitoring and Audit Report (July 2019)  
for EP-376/2009, FEP-01/376/2009 and FEP-02/376/2009**

Reference is made to the Environmental Team's submission of the captioned Monthly Environmental Monitoring and Audit (EM&A) Report for July 2019 received by e-mail on 12 August 2019 for our review and comment.

Please be informed that we have no adverse comment on the captioned submission. We write to verify the captioned submission in accordance with Condition 3.4 in the captioned Environmental Permit.

Thank you very much for your attention and please do not hesitate to contact the undersigned should you have any queries.

Yours sincerely,



David Yeung  
Independent Environmental Checker

c.c.	CEDD	Attn: Mr. Jimmy Ling	by fax: 2301 1277
	AECOM	Attn: Ms. Gloria Tang	by fax: 2587 1877
	AECOM	Attn: Mr. Francis Leong/ Stephen Lai	by fax: 2691 2649
	Lam	Attn: Mr. Raymond Dai	by fax: 2882 3331

Q:\Projects\AACWBIECEM00\Corr\AACWBIECEM00\_0\_11547L.19.docx



**TABLE OF CONTENTS**

**EXECUTIVE SUMMARY ..... 3**

**1 INTRODUCTION..... 5**

1.1 Scope of the Report ..... 5

1.2 Structure of the Report ..... 5

**2 PROJECT BACKGROUND..... 7**

2.1 Background ..... 7

2.2 Scope of the Project and Site Description..... 7

2.3 Project Organization and Contact Personnel..... 8

**3 STATUS OF REGULATORY COMPLIANCE ..... 9**

3.1 Status of Environmental Licensing and Permitting under the Project..... 9

**4 MONITORING REQUIREMENTS ..... 11**

4.1 Noise Monitoring..... 11

4.2 Air Quality Monitoring ..... 12

**5 MONITORING RESULTS ..... 14**

5.1 Noise Monitoring Results ..... 14

5.2 Air Quality Monitoring Results ..... 15

5.3 Waste Monitoring Results ..... 15

**6 COMPLIANCE AUDIT ..... 16**

6.1 Noise Monitoring..... 16

6.2 Air Quality Monitoring ..... 16

6.3 Review of the Reasons for and the Implications of Non-compliance..... 16

6.4 Summary of action taken in the event of and follow-up on non-compliance  
16

**7 CUMULATIVE CONSTRUCTION IMPACT DUE TO THE CONCURRENT  
PROJECTS ..... 17**

**8 ENVIRONMENTAL SITE AUDIT ..... 17**

**9 COMPLAINTS, NOTIFICATION OF SUMMONS AND PROSECUTION..... 19**

**10 CONCLUSION..... 20**



## LIST OF TABLES

[Table 2.1 Schedule 2 Designated Projects under this Project](#)

[Table 2.2 Contact Details of Key Personnel](#)

[Table 3.1 Summary of the current status on licences and/or permits on environmental protection pertinent to the Project](#)

[Table 3.2 Cumulative Summary of Valid Licences and Permits under Contract no. HK/2012/08](#)

[Table 3.3 Summary of submission status under FEP-01/376/2009 Condition](#)

[Table 4.1 Noise Monitoring Stations](#)

[Table 4.2 Air Quality Monitoring Stations](#)

[Table 5.1 Noise Monitoring Stations for Contract no. HK/2012/08](#)

[Table 5.2 Air Quality Monitoring Station for Contract no. HK/2012/08](#)

[Table 5.3 Details of Waste Disposal for Contract no. HK/2012/08](#)

[Table 8.1 Summary of Environmental Inspections for Contract no. HK/2012/08](#)

[Table 9.1 Cumulative Statistics on Complaints](#)

[Table 9.2 Cumulative Statistics on Successful Prosecutions](#)

[Table 10.1 Summary of Key Construction Activities of Individual Contract\(s\) to be commenced in Coming Reporting Month](#)

## LIST OF FIGURES

[Figure 2.1](#) Project Layout

[Figure 2.2](#) Project Organization Chart

[Figure 4.1](#) Locations of Environmental Monitoring Stations

## LIST OF APPENDICES

[Appendix 3.1](#) Environmental Mitigation Implementation Schedule

[Appendix 4.1](#) Action and Limit Level

[Appendix 5.1](#) Monitoring Schedule for Reporting Month and Coming month

[Appendix 5.2](#) Noise Monitoring Results and Graphical Presentations

[Appendix 5.3](#) Air Quality Monitoring Results and Graphical Presentations

[Appendix 6.1](#) Event Action Plans

[Appendix 6.2](#) Notification of Exceedance

[Appendix 9.1](#) Complaint Log

[Appendix 10.1](#) Construction Programme of Individual Contracts

## EXECUTIVE SUMMARY

- i. This is the Environmental Monitoring and Audit (EM&A) Monthly Report – [July 2019](#) specific for Environmental Permit no. EP-376/2009 and Further Environmental Permits no. FEP-01/376/2009 and FEP-02/376/2009. The EM&A report is prepared by the Environmental Team (ET) employed under Contract No. HK/2015/01 – Wan Chai Development Phase II and Central Wanchai Bypass – Sampling, Field Measurement and Testing Works (Stage 3). This report presents the environmental monitoring findings and information recorded during the period of [27<sup>th</sup> June 2019 to 26<sup>th</sup> July 2019](#). The cut-off date of reporting is at 26<sup>th</sup> of each reporting month.
- ii. In the reporting month, the principal work activities of the contract are included as follows:  
Contract no. HK/2012/08 – Wan Chai Development Phase II – Central- Wan Chai Bypass at Wan Chai West
  - [Landscaping](#)

### Noise Monitoring

- iii. Noise monitoring was conducted at M1a – Harbour Road Sports Centre.
- iv. With respect to the shift in major construction site portions at Wan Chai North, the noise monitoring station M1a – Harbour Road Sports Centre was finely adjusted from East of Harbour Road Sports Centre to West of Harbour Road Sports Centre on 21 June 2016.
- v. With respect to the demolition of Ex-Harbour Road Sports Centre, the respective noise monitoring station M1a – Harbour Road Sports Centre were finely adjusted on 16 and 25 May 2017 and thereafter to the Footbridge for Harbour Road Sports for noise monitoring.
- vi. With respect to WDII RSS confirmed that the remaining works under HK/2012/08 would be tree planting works at EP-376/2009 area only, considered that no adverse noise impact would be contributed by the tree planting works, the respective noise monitoring at noise monitoring station M1a - Footbridge at EX-Wanchai Harbour Road Sports Centre was temporary suspended from 27 March 2019 onwards.

### Air Quality Monitoring

- vii. 1-hour and 24-hour Total Suspended Particulates (TSP) monitoring were conducted on every six days basis at CMA5b – Pedestrian Plaza and CMA6a – Contractor HK/2012/08 Site Office.
- viii. With respect to WDII RSS confirmed that the remaining works under HK/2012/08 would be tree planting works at EP-376/2009 area only, considered that no adverse air quality impact would be contributed by the tree planting works, the respective air quality monitoring at monitoring stations CMA5b – Pedestrian Plaza and CMA6a – Contractor HK/2012/08 Site Office, were temporary suspended from 27 March 2019 onwards.



Complaints, Notifications of Summons and Successful Prosecutions

- ix. No environmental complaint was received in this reporting month.

Site Inspections and Audit

- x. The Environmental Team (ET) conducted weekly site inspection for Contract no. HK/2012/08 in this reporting period. The Contractors rectified major observations and recommendations made during the audit sessions. No non-conformance was identified during the site inspections.

Future Key Issues

- xi. In the coming reporting month, the principal work activities of the contract is anticipated as follows:

Contract no. HK/2012/08 – Wan Chai Development Phase II – Central- Wan Chai Bypass at Wan Chai West

- Landscaping

## 1 INTRODUCTION

### 1.1 Scope of the Report

1.1.1. Lam Geotechnics Limited (LGL) has been appointed take up the role as the Environmental Team (ET) under Environmental Permit no. EP-376/2009 and Further Environmental Permits no. FEP-01/376/2009 and FEP-02/376/2009 to implement the Environmental Monitoring and Audit (EM&A) programme as stipulated in the EM&A Manual of the approved Environmental Impact Assessment (EIA) Report for Wan Chai Development Phase II and Central-Wan Chai Bypass (Register No.: AEIAR-125/2008).

This report documents the finding of EM&A works for Environmental Permit (EP) no. EP-376/2009 and Further Environmental Permits no. FEP-01/376/2009 and FEP-02/376/2009, during the period of [27<sup>th</sup> June 2019 to 26<sup>th</sup> July 2019](#). The cut-off date of reporting is the 26<sup>th</sup> of each reporting month.

### 1.2 Structure of the Report

- Section 1**      **Introduction** – details the scope and structure of the report.
- Section 2**      **Project Background** – summarizes background and scope of the project, site description, project organization and contact details of key personnel during the reporting period.
- Section 3**      **Status of Regulatory Compliance** – summarizes the status of valid Environmental Permits / Licenses during the reporting period.
- Section 4**      **Monitoring Requirements** – summarizes all monitoring parameters, monitoring methodology and equipment, monitoring locations, monitoring frequency, criteria and respective event and action plan and monitoring programmes.
- Section 5**      **Monitoring Results** – summarizes the monitoring results obtained in the reporting period.
- Section 6**      **Compliance Audit** – summarizes the auditing of monitoring results, all exceedances environmental parameters.
- Section 7**      **Cumulative Construction Impact due to the Concurrent Projects** – summarizes the relevant cumulative construction impact due to the concurrent activities of the concurrent Projects.



- Section 8**      ***Environmental Site Audit*** – summarizes the findings of weekly site inspections undertaken within the reporting period, with a review of any relevant follow-up actions within the reporting period.
- Section 9**      ***Complaints, Notification of summons and Prosecution*** – summarizes the cumulative statistics on complaints, notification of summons and prosecution
- Section 10**     ***Conclusion***



## 2 PROJECT BACKGROUND

### 2.1 Background

2.1.1 Wan Chai Development phase II and Central-Wan Chai Bypass (hereafter called “the Project”) are Designated Project (DP) under the Environmental Impact Assessment Ordinance (Cap. 499) (EIAO). The Environmental Impact Assessment (EIA) Report for Wan Chai Development phase II and Central-Wan Chai Bypass (Register No.: AEIAR-125/2008) has been approved on 11 December 2008.

### 2.2 Scope of the Project and Site Description

2.2.1. The design and construction of Wan Chai Development Phase II and Central Wanchai Bypass involves the construction and operation of primary and district distributor roads that is shown at [Figure 2.1](#).

2.2.2. The key purpose of the study area encompasses the Wan Chai harbourfront area. The area starts at the boundary of Central Reclamation Phase III (CRIII) at the west and connects to the existing Hung Hing Road at the east. The scope of the project includes:

- A dual 2-lane primary distributor road, Road P2, approximately 0.6km in length; and
- Other new primary and district distributor roads connecting to the slip roads of the Central-Wan Chai Bypass with a total length of approximately 0.7km.

2.2.3. The project also contains various Schedule 2 DP that, under the EIAO, require Environmental Permits (EPs) to be granted by the DEP before they may be either constructed or operated. **Table 2.1** summarises the DP under this Project. [Figure 2.1](#) shows the locations of these Schedule 2 DP.

**Table 2.1 Schedule 2 Designated Project under this Project**

Item	Designated Project	EIAO Reference
DP2	Road P2 and other roads which are classified as primary/district distributor roads	Schedule 2, Part I, A.1

2.2.4. The designated project work II (DP2) was awarded to China State – Build King Joint Venture HK/2012/08 (Contract Title: Wan Chai Development Phase II Central – Wan Chai Bypass at Wan Chai West) as part of the Project works by the Civil Engineering and Development Department (CEDD). The construction work under Contract no. HK/2012/08 was commenced on 13 May 2015.

**2.3 Project Organization and Contact Personnel**

2.3.1 Civil Engineering and Development Department and Highway Department are the overall project controllers for the Wan Chai Development Phase II and Central-Wan Chai Bypass respectively. For the construction phase of the Project, Project Engineer, Contractor(s), Environmental Team and Independent Environmental Checker are appointed to manage and control environmental issues.

2.3.2 The proposed project organization and lines of communication with respect to environmental protection works are shown in [Figure 2.2](#). Key personnel and contact particulars are summarized in **Table 2.2**:

**Table 2.2 Contact Details of Key Personnel**

Party	Role	Post	Name	Contact No.	Contact Fax
AECOM	Engineer's Representative for WDII	Chief Resident Engineer	Ms. Gloria Tang	2587 1778	2587 1877
China State-Build King Joint Venture	Contractor under Contract no. HK/2012/08	Project Director	C. N. LAI	9106 5806	2877 1522
		Site Agent	Mr. George Cheung	9268 1918	
		Environmental Officer	Mr. James Ma	9130 9549	
		Environmental Supervisor	Mr. Y.L. Ho	9856 5669	
Ramboll Hong Kong Limited	Independent Environmental Checker (IEC)	Independent Environmental Checker (IEC)	Mr. David Yeung	3465 2888	3465 2899
Lam Geotechnics Limited	Environmental Team (ET)	Environmental Team Leader (ETL)	Mr. Raymond Dai	2882 3939	2882 3331

2.3.3 In this reporting month, the principal work activities of the contract is included as follows:  
Contract no. HK/2012/08 – Wan Chai Development Phase II – Central- Wan Chai Bypass at Wan Chai West

- Landscaping

2.3.4 In coming reporting month, the principal work activities of the contract is anticipated as follows:

Contract no. HK/2012/08 – Wan Chai Development Phase II – Central- Wan Chai Bypass at Wan Chai West

- Landscaping

### 3 STATUS OF REGULATORY COMPLIANCE

#### 3.1 Status of Environmental Licensing and Permitting under the Project

3.1.1. A summary of the current status on licences and/or permits on environmental protection pertinent to the Project is shown in **Table 3.1**.

**Table 3.1 Summary of the current status on licences and/or permits on environmental protection pertinent to the Project**

Permits and/or Licences	Reference No.	Issued Date	Status
Environmental Permit	EP-376/2009	13 Nov 2009	Valid
Further Environmental Permit	FEP-01/376/2009	31 Mar 2015	Valid
Further Environmental Permit	FEP-02/376/2009	1 Aug 2016	Valid

3.1.2. The current status on licences and/or permits on environmental protection pertinent for contract no. HK/2012/08 under FEP-02/376/2009 showed in **Table 3.2** and **Table 3.3**

**Table 3.2 Cumulative Summary of Valid Licences and Permits under Contract no. HK/2012/08**

Permits and/or Licences	Reference No.	Issued Date	Valid Period/ Expiry Date	Status
Further Environmental Permit	FEP-01/376/2009	31 Mar 2015	N/A	Valid
	FEP-02/376/2009	1 Aug 2016	N/A	Valid
Notification of Works Under APCO	355439	4 Feb 2013	N/A	Valid
Registration as a Chemical Waste Producer	5213-134-C3790-01	30 Jun 2016	N/A	Valid
Billing Account under Waste Disposal Ordinance	7016883	18 Feb 2013	N/A	Valid
Water Discharge Licence	WT00018470-2014	6 Mar 2014	31 Mar 2019	Expired
Construction Noise Permit	GW-RS0294-19	5 Apr 2019	5 Apr 2019 to 4 Oct 2019	Valid
	GW-RS0632-19	11 Jul 2019	13 Jul 2019 to 12 Jan 2020	Valid

**Table 3.3 Summary of submission status under FEP-02/376/2009 Condition**

EP Condition	Submission	Date of Submission
Condition 2.9	Noise Management Plan (Rev. 2)	Generally in order as commented by EPD on 27 Oct 2015
Condition 2.10	Landscape Plan (Rev. 0)	Generally in order as commented by EPD on 5 Aug 2015

- 3.1.3. Implementation status of the recommended mitigation measures during this reporting month is presented in [Appendix 3.1](#).

## 4 MONITORING REQUIREMENTS

### 4.1 Noise Monitoring

#### NOISE MONITORING STATION

- 4.1.1. The noise monitoring station for the Project is listed and shown in **Table 4.1** and **Figure 4.1**. [Appendix 4.1](#) shows the established Action/Limit Levels for the monitoring works.

**Table 4.1 Noise Monitoring Station**

District	Station	Description
Wan Chai	M1a	Footbridge for Ex-Harbour Road Sports Centre

#### NOISE MONITORING PARAMETERS, FREQUENCY AND DURATION

- 4.1.2. The construction noise level shall be measured in terms of the A-weighted equivalent continuous sound pressure level ( $L_{eq}$ ).  $L_{eq}$  (30 minutes) shall be used as the monitoring parameter for the time period between 0700 and 1900 hours on normal weekdays. For all other time periods,  $L_{eq}$  (5 minutes) shall be employed for comparison with the Noise Control Ordinance (NCO) criteria. Supplementary information for data auditing, statistical results such as L10 and L90 shall also be obtained for reference.
- 4.1.3. Noise monitoring shall be carried out at all the designated monitoring stations. The monitoring frequency shall depend on the scale of the construction activities. The following is an initial guide on the regular monitoring frequency for each station on a weekly basis when noise generating activities are underway:
- One set of measurements between 0700 and 1900 hours on normal weekdays.

#### MONITORING EQUIPMENT

- 4.1.4. As referred to in the Technical Memorandum <sup>TM</sup> issued under the NCO, sound level meters in compliance with the International Electrotechnical Commission Publications 651: 1979 (Type 1) and 804: 1985 (Type 1) specifications shall be used for carrying out the noise monitoring. Immediately prior to and following each noise measurement the accuracy of the sound level meter shall be checked using an acoustic calibrator generating a known sound pressure level at a known frequency. Measurements may be accepted as valid only if the calibration level from before and after the noise measurement agrees to within 1.0 dB.
- 4.1.5. Noise measurements shall not be made in fog, rain, wind with a steady speed exceeding 5 m/s or wind with gusts exceeding 10 m/s. The wind speed shall be checked with a portable wind speed meter capable of measuring the wind speed in m/s.

**4.2 Air Quality Monitoring**

AIR QUALITY MONITORING STATIONS

4.2.1. The air quality monitoring stations for the Project are listed and shown in **Table 4.2** and **Figure 4.1**. **Appendix 4.1** shows the established Action/Limit Levels for the monitoring works.

**Table 4.2 Air Quality Monitoring Stations**

Station ID	Description
CMA5b	Pedestrian Plaza
CMA6a	WDII PRE Site Office

AIR QUALITY MONITORING PARAMETERS, FREQUENCY AND DURATION

4.2.2. One-hour and 24-hour TSP levels should be measured to indicate the impacts of construction dust on air quality. The 24-hour TSP levels shall be measured by following the standard high volume sampling method as set out in the Title 40 of the Code of Federal Regulations, Chapter 1 (Part 50), Appendix B.

4.2.3. All relevant data including temperature, pressure, weather conditions, elapsed-time meter reading for the start and stop of the sampler, identification and weight of the filter paper, and any other local atmospheric factors affecting or affected by site conditions, etc., shall be recorded down in detail.

4.2.4. For regular impact monitoring, the sampling frequency of at least once in every six-days, shall be strictly observed at all the monitoring stations for 24-hour TSP monitoring. For 1-hour TSP monitoring, the sampling frequency of at least three times in every six-days should be undertaken when the highest dust impact occurs.

SAMPLING PROCEDURE AND MONITORING EQUIPMENT

4.2.5. High volume samplers (HVSs) in compliance with the following specifications shall be used for carrying out the 1-hour and 24-hour TSP monitoring:

- 0.6 – 1.7 m<sup>3</sup> per minute adjustable flow range;
- Equipped with a timing / control device with +/- 5 minutes accuracy for 24 hours operation;
- Installed with elapsed-time meter with +/- 2 minutes accuracy for 24 hours operation;
- Capable of providing a minimum exposed area of 406 cm<sup>2</sup>;
- Flow control accuracy: +/- 2.5% deviation over 24-hour sampling period;
- Equipped with a shelter to protect the filter and sampler;
- Incorporated with an electronic mass flow rate controller or other equivalent devices;
- Equipped with a flow recorder for continuous monitoring;

- Provided with a peaked roof inlet;
- Incorporated with a manometer;
- Able to hold and seal the filter paper to the sampler housing at horizontal position;
- Easily changeable filter; and
- Capable of operating continuously for a 24-hour period.

4.2.6. Initial calibration of dust monitoring equipment shall be conducted upon installation and thereafter at bi-monthly intervals. The transfer standard shall be traceable to the internationally recognized primary standard and be calibrated annually. The concern parties such as IEC shall properly document the calibration data for future reference. All the data should be converted into standard temperature and pressure condition.

#### LABORATORY MEASUREMENT / ANALYSIS

4.2.7. A clean laboratory with constant temperature and humidity control, and equipped with necessary measuring and conditioning instruments to handle the dust samples collected, shall be available for sample analysis, and equipment calibration and maintenance. The laboratory should be HOKLAS accredited.

4.2.8. Filter paper of size 8" x 10" shall be labelled before sampling. It shall be a clean filter paper with no pinholes, and shall be conditioned in a humidity-controlled chamber for over 24-hours and be pre-weighed before use for the sampling.

4.2.9. After sampling, the filter paper loaded with dust shall be kept in a clean and tightly sealed plastic bag. The filter paper shall then be returned to the laboratory for reconditioning in the humidity controlled chamber followed by accurate weighing by an electronic balance with readout down to 0.1 mg. The balance shall be regularly calibrated against a traceable standard.

4.2.10. All the collected samples shall be kept in a good condition for 6 months before disposal.

## 5 MONITORING RESULTS

- 5.0.1. The environmental monitoring will be implemented based on the division of works areas of the designated project managed under the contract with FEP applied by individual contractors. Overall layout showing work areas of various contracts, latest status of work commencement and monitoring stations is shown in [Figure 2.1](#) and [Figure 4.1](#).
- 5.0.2. The environment monitoring schedules for reporting month and coming month are presented in [Appendix 5.1](#).

### 5.1 Noise Monitoring Results

- 5.1.1 The proposed division of noise monitoring station is summarized in **Table 5.1** below.

**Table 5.1 Noise Monitoring Station for Contract no. HK/2012/08**

Location ID	District	Description
M1a	Wan Chai	Footbridge for Ex-Harbour Road Sports Centre

- 5.1.2 With respect to WDII RSS confirmed that the remaining works under HK/2012/08 would be tree planting works at EP-376/2009 area only, considered that no adverse noise impact would be contributed by the tree planting works, the respective noise monitoring at noise monitoring station M1a - Footbridge at EX-Wanchai Harbour Road Sports Centre was temporary suspended from 27 March 2019 onwards.
- 5.1.3 The noise monitoring results measured in the past reporting period are reviewed and summarized. Details of the noise monitoring results and graphical presentation can be referred to [Appendix 5.2](#).



## 5.2 Air Quality Monitoring Results

5.2.1 The proposed division of air quality monitoring stations are summarized in **Table 5.2** below.

**Table 5.2 Air Quality Monitoring Station for Contract no. HK/2012/08**

Station	Description
CMA5b	Pedestrian Plaza
CMA6a	WDII PRE Site Office

5.2.2 With respect to WDII RSS confirmed that the remaining works under HK/2012/08 would be tree planting works at EP-376/2009 area only, considered that no adverse air quality impact would be contributed by the tree planting works, the respective air quality monitoring at air quality monitoring stations CMA5b – Pedestrian Plaza and CMA6a – Contractor HK/2012/08 Site Office were temporary suspended from 27 March 2019 onwards

5.2.3 The air quality monitoring results measured in the past reporting period are reviewed and summarized. Details of air quality monitoring results and graphical presentation can be referred in [Appendix 5.3](#).

## 5.3 Waste Monitoring Results

5.3.1 No Inert and non-inert C&D wastes disposed in this reporting month. Details of the waste flow table are summarized in **Table 5.3**.

**Table 5.3 Details of Waste Disposal for Contract no. HK/2012/08**

Waste Type	Quantity this month	Cumulative Quantity-to-Date	Disposal / Dumping Grounds
Inert C&D materials disposed, m3	NIL	NIL	NIL
Inert C&D materials recycled, m3	NIL	NIL	NIL
Non-inert C&D materials disposed, m3	NIL	NIL	NIL
Non-inert C&D materials recycled, m3	NIL	NIL	NIL
Chemical waste disposed, kg	NIL	NIL	NIL

## **6 COMPLIANCE AUDIT**

6.0.1. The Event Action Plan for construction noise and air quality are presented in [Appendix 6.1](#).

### **6.1 Noise Monitoring**

6.1.1 With respect to WDII RSS confirmed that the remaining works under HK/2012/08 would be tree planting works at EP-376/2009 area only, considered that no adverse noise impact would be contributed by the tree planting works, the respective noise monitoring at noise monitoring station M1a - Footbridge at EX-Wanchai Harbour Road Sports Centre was temporary suspended from 27 March 2019 onwards.

### **6.2 Air Quality Monitoring**

6.2.1 With respect to WDII RSS confirmed that the remaining works under HK/2012/08 would be tree planting works at EP-376/2009 area only, considered that no adverse air quality impact would likely be contributed by the tree planting works, the respective air quality monitoring at air quality monitoring stations CMA5b – Pedestrian Plaza and CMA6a – Contractor HK/2012/08 Site Office were temporary suspended from 27 March 2019 onwards.

### **6.3 Review of the Reasons for and the Implications of Non-compliance**

6.3.1 There was no non-compliance from the site audits in the reporting period. The observations and recommendations made in each individual site audit session were presented in Section 8.

### **6.4 Summary of action taken in the event of and follow-up on non-compliance**

6.4.1 There was no particular action taken since no non-compliance was recorded from the site audits in the reporting period.

## 7 CUMULATIVE CONSTRUCTION IMPACT DUE TO THE CONCURRENT PROJECTS

- 7.0.1. According to the Condition 3.4 of the EP-376/2009, this section addresses the relevant cumulative construction impact due to the concurrent activities of the current projects including the Central Reclamation Phase III (CRIII), Wan Chai Development Phase II (WDII), Central-WanChai Bypass (CWB), Island Eastern Corridor Link projects (IECL) and Wan Chai Development Phase II – Central – Wan Chai Bypass at Wan Chai East (CWB Tunnel).
- 7.0.2. According to the Final EM&A report of Central Reclamation Phase III (CRIII) for Contract HK 12/02, the major construction activities were completed by end of January 2014 and no construction activities were undertaken thereafter and the water quality monitoring was completed in October 2011. As such, it is considered that there were no cumulative construction impact due to the concurrent activities of the current projects with the Central Reclamation Phase III (CRIII) undertaken by contractor HK12/02 in the reporting month.
- 7.0.3. According to the construction programme of Central-Wanchai Bypass at Wanchai West at the Central Reclamation Phase III area include roadworks, drainage, seawall coping, dismantling of temporary landing steps and junction modification were performed in July 2019 reporting period. As no project related exceedance were recorded during the reporting period, cumulative construction impact due to the concurrent activities of the current projects with the Central Reclamation Phase III (CRIII) was considered as insignificant.
- 7.0.4. According to the construction programme of Wan Chai Development Phase II, Central-Wan Chai Bypass and Island Eastern Corridor Link projects, the major construction activities under Wan Chai Development Phase II were road and drains construction and trimming work at WCR4 at Wan Chai. The major construction activities under Central-Wan Chai Bypass and Island Eastern Corridor Link Projects were ventilation building ABWF works and junction modification at Central; seabed reinstatement at Causeway Bay; road works, drainage improvement work, utility diversion works and landscape works at Victoria Park; bridge noise enclosure installation works, road works, drainage works, soft landscape works and ventilation building ABWF work at North Point area in the reporting period. In addition, other non-Wan Chai Development Phase II, Central-Wan Chai Bypass and Island Eastern Corridor Link projects were observed undertaken at Wan Chai North and North Point area.

## 8 ENVIRONMENTAL SITE AUDIT

8.0.1. Four site inspections for Contract no. HK/2012/08 were carried out on 2 July, 9, 16, and 23 July 2019 in this reporting period. The results of inspection and outcome are summarized in **Table 8.1**.

**Table 8.1 Summary of Environmental Inspections for Contract no. HK/2012/08**

Item	Date	Observations	Action taken by Contractor	Outcome
190716_1	16-Jul-19	Dust mitigation measure shall be provided to dusty surface	Watering was provided to dusty surface	Completion as observed on 23 July 2019
190723_1	23-Jul-19	Hoarding shall be install along the site boundary to avoid potential dust nuisance	pending	pending

Mitigation measures implemented to prevent muddy discharge and surface runoff

8.0.2. With a view to ensure the adequacy and effectiveness of measures to prevent the discharge of muddy water, including surface run-off, from construction works during wet season, the following mitigation measures were implemented by Contractor(s) in the reporting period:

Contract No.	Mitigation Measures implemented
HK/2012/08	<ul style="list-style-type: none"> <li>• Deployment of embankment along seawall</li> <li>• Regular cleaning the sand / silt / mud sitting along the seawall</li> <li>• Hard paved the area along seafront</li> <li>• Cover the stockpile material to avoid excessive surface runoff</li> <li>• Regular review and maintenance of the site drainage system</li> <li>• Discharge of wastewater via wastewater treatment plant if necessary</li> </ul>

## 9 COMPLAINTS, NOTIFICATION OF SUMMONS AND PROSECUTION

- 9.0.1. No environmental complaint was received in the reporting period.
- 9.0.2. The details of cumulative complaint log and updated summary of complaints are presented in [Appendix 9.1](#)
- 9.0.3. Cumulative statistic on complaints and successful prosecutions are summarized in **Table 9.1** and **Table 9.2** respectively.

**Table 9.1 Cumulative Statistics on Complaints**

Reporting Period	No. of Complaints
Commencement works (May 2015) to last reporting month	0
July 2019	0
Total	0

**Table 9.2 Cumulative Statistics on Successful Prosecutions**

Environmental Parameters	Cumulative No. Brought Forward	No. of Successful Prosecutions this month (Offence Date)	Cumulative No. Project-to-Date
Air	0	0	0
Noise	0	0	0
Water	0	0	0
Waste	0	0	0
<b>Total</b>	<b>0</b>	<b>0</b>	<b>0</b>

## 10 CONCLUSION

10.0.1. The EM&A programme was carried out in accordance with the EM&A Manual requirements, minor alterations to the programme proposed were made in response to changing circumstances.

10.0.2. The scheduled construction activities and the recommended mitigation measures for the coming month are listed in **Table 10.1**. The construction programmes of individual contracts are provided in [Appendix 10.1](#).

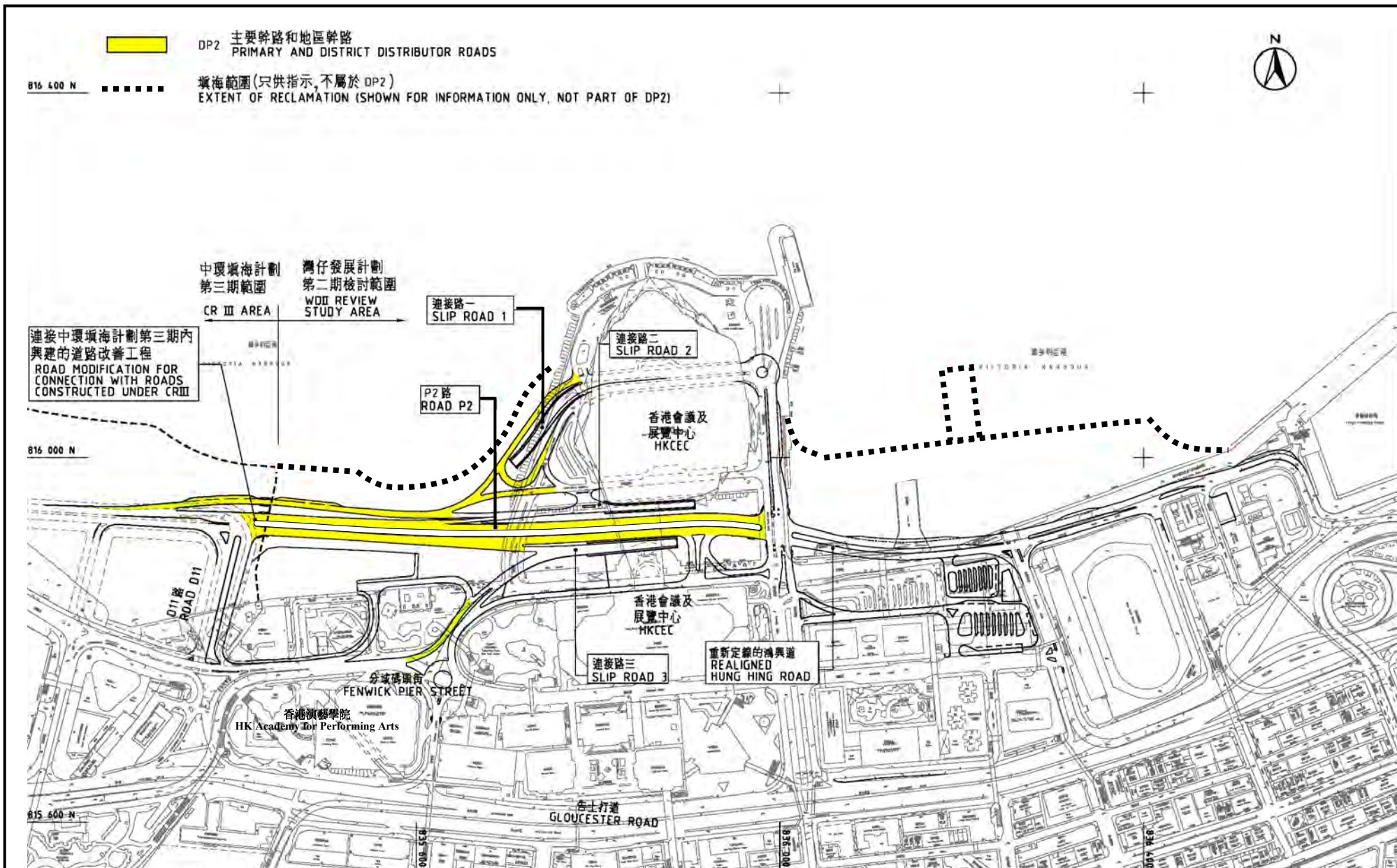
**Table 10.1 Summary of Key Construction Activities of Individual Contract(s) to be commenced in Coming Reporting Month**

Contract No.	Key Construction Works	Recommended Mitigation Measures
HK/2012/08	<ul style="list-style-type: none"><li>Landscaping</li></ul>	<ul style="list-style-type: none"><li>Nil</li></ul>



***Figure 2.1***

***Project Layout***



Project Title : Road P2 and other roads which are classified as primary/district distributor roads (referred to as "DP2" in the WDII&CWB EIA Report)

工程項目名稱: P2路及其他分類為主要幹路或地區幹路的道路(WDII&CWB 環評報告內稱 "DP2")

Environmental Permit No.: EP-376/2009

環境許可證編號 : EP-376/2009

Figure 1: Location of the Project

圖 1: 工程項目位置圖

(This figure was prepared based on Figure 1.2b of the WDII&CWB EIA report (Register No.: AEIAR-125/2008) (本圖是根據 WDII&CWB 環評報告 (登記冊編號 AEIAR-125/2008) 圖 1.2b 編制)





***Figure 2.2***

***Project Organization Chart***



### Project Organization Chart

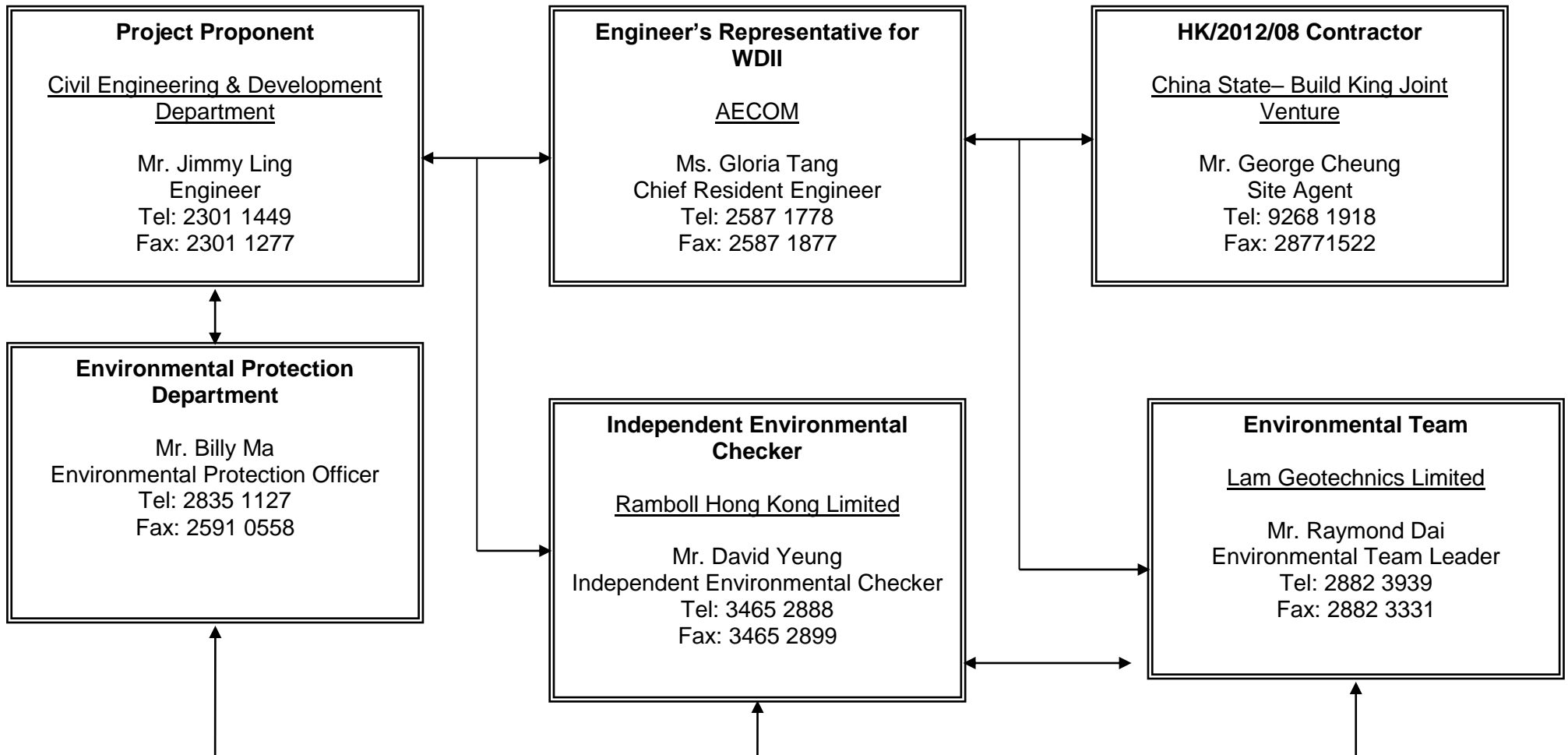


Figure 2.2



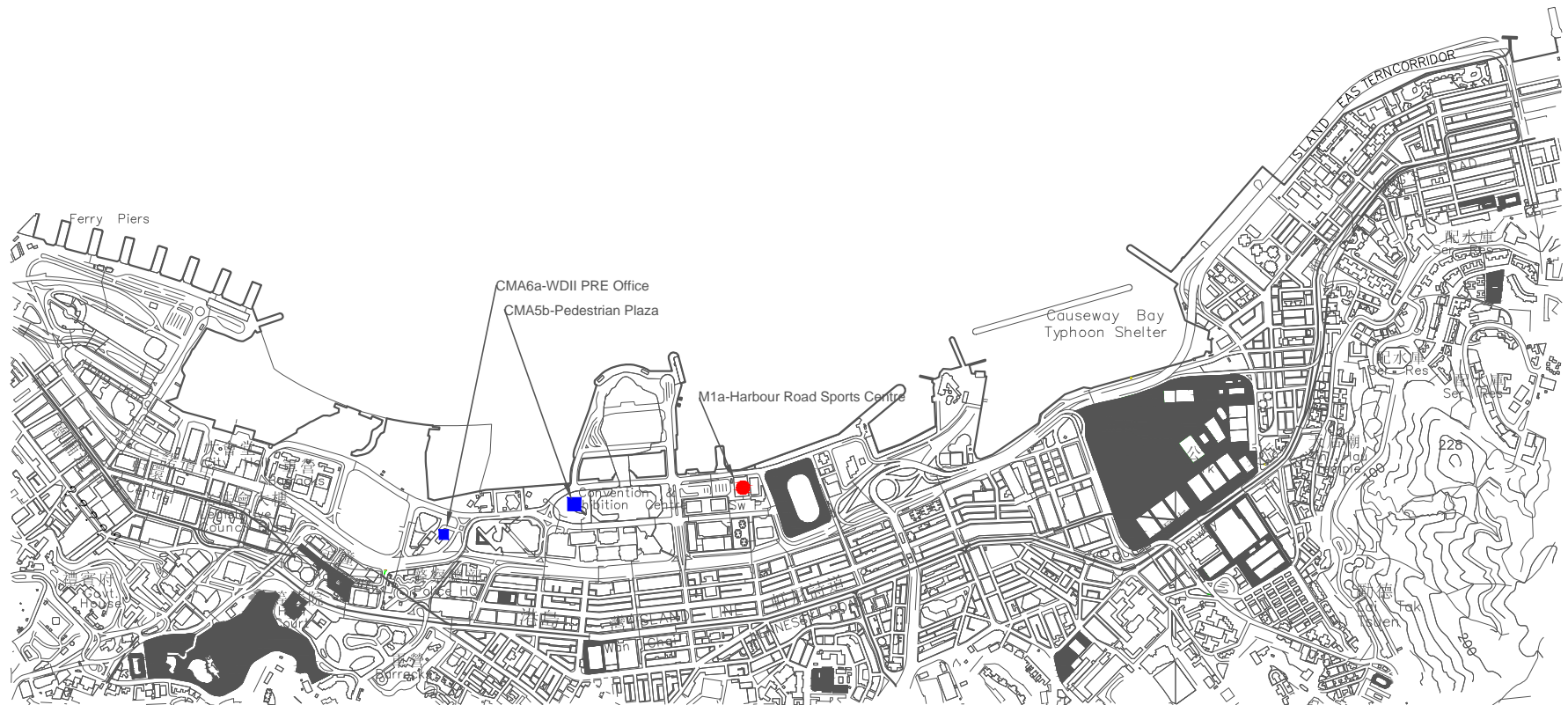
***Figure 4.1***

***Locations of Monitoring Stations***

**Legend**

● Noise Monitoring Station

■ Air Monitoring Station



**LOCATIONS OF AIR QUALITY AND NOISE MONITORING STATIONS**



***Appendix 3.1***

***Environmental Mitigation Implementation Schedule***

**Appendix A**

**Table A13.1 Implementation Schedule for Air Quality Control**

**Table A13.2 Implementation Schedule for Noise Control**

**Table A13.3 Implementation Schedule for Water Quality Control**

**Table A13.4 Implementation Schedule for Waste Management**

**Table A13.7 Implementation Schedule for Landscape and Visual**

## IMPLEMENTATION SCHEDULE OF THE PROPOSED MITIGATION MEASURES

**Table A13.1 Implementation Schedule for Air Quality Control**

EIA Ref	Environmental Protection Measures / Mitigation Measures	Location / Timing	Implementation Agent	Implementation stage				Relevant Legislation and Guidelines
				Des	C	O	Dec	
<b>Construction Phase</b>								
<i>For the Whole Project</i>								
S3.6.5	Four times a day watering of the work site with active operations.	Work site / during construction	Contractor		√			EIAO-TM
S3.8.1	<p>Implementation of dust suppression measures stipulated in Air Pollution Control (Construction Dust) Regulation. The following mitigation measures, good site practices and a comprehensive dust monitoring and audit programme are recommended to minimise cumulative dust impacts.</p> <ul style="list-style-type: none"> <li>▪ Strictly limit the truck speed on site to below 10 km per hour and water spraying to keep the haul roads in wet condition;</li> <li>▪ Watering during excavation and material handling;</li> <li>▪ Provision of vehicle wheel and body washing facilities at the exit points of the site, combined with cleaning of public roads where necessary; and</li> <li>▪ Tarpaulin covering of all dusty vehicle loads transported to, from and between site locations.</li> </ul>	Work site / during construction	Contractor		√			

▪ Des - Design, C - Construction, O – Operation, and Dec – Decommissioning

**Table A13.2 Implementation Schedule for Noise Control**

EIA Ref	Environmental Protection Measures / Mitigation Measures	Location / Timing	Implementation Agent	Implementation stage				Relevant Legislation and Guidelines
				Des	C	O	Dec	
<b>Construction Phase</b>								
<i>For the Whole Project</i>								
S4.9.4	<p>Good Site Practice:</p> <ul style="list-style-type: none"> <li>▪ Only well-maintained plant shall be operated on-site and plant shall be serviced regularly during the construction program.</li> <li>▪ Silencers or mufflers on construction equipment shall be utilized and shall be properly maintained during the construction program.</li> <li>▪ Mobile plant, if any, shall be sited as far away from NSRs as possible.</li> <li>▪ Machines and plant (such as trucks) that may be in intermittent use shall be shut down between works periods or shall be throttled down to a minimum.</li> <li>▪ Plant known to emit noise strongly in one direction shall, wherever possible, be orientated so that the noise is directed away from the nearby NSRs.</li> <li>▪ Material stockpiles and other structures shall be effectively utilized, wherever practicable, in screening noise from onsite construction activities.</li> </ul>	Work site / during construction	Contractor		√			EIAO-TM, NCO
<i>For DP2 – WDII Major Roads (Road P2)</i>								
S4.8.3 – S4.8.4	<p>Use of quiet powered mechanical equipment, movable noise barrier and temporary noise barrier for the following tasks:</p> <ul style="list-style-type: none"> <li>▪ Temporary road diversion</li> <li>▪ Resurfacing</li> <li>▪ At-grade roadwork</li> </ul>	Work site / during construction	Contractor		√			EIAO-TM, NCO

- Des - Design, C - Construction, O – Operation, and Dec – Decommissioning



**Table A13.3 Implementation Schedule for Water Quality Control**

EIA Ref	Environmental Protection Measures / Mitigation Measures	Location / Timing	Implementation Agent	Implementation stage				Relevant Legislation and Guidelines
				Des	C	O	Dec	
<b>Construction Phase</b>								
<i>For the Whole Project</i>								
S5.8	<p><i>Construction Runoff and Drainage</i></p> <ul style="list-style-type: none"> <li>▪ use of sediment traps, wheel washing facilities for vehicles leaving the site, and adequate maintenance of drainage systems to prevent flooding and overflow;</li> <li>▪ Permanent drainage channels shall incorporate sediment basins or traps and baffles to enhance deposition rates. The design of efficient silt removal facilities shall be based on the guidelines in Appendix A1 of ProPECC PN 1/94;</li> <li>▪ a sediment tank constructed from pre-formed individual cells of approximately 6 - 8 m3 capacity can be used for settling ground water prior to disposal;</li> <li>▪ Oil interceptors shall be provided in the drainage system for the tunnels and regularly cleaned to prevent the release of oils and grease into the storm water drainage system after accidental spillages. The interceptor shall have a bypass to prevent flushing during periods of heavy rain; precautions and actions to be taken when a rainstorm is imminent or forecast, and during or after rainstorms. Particular attention shall be paid to the control of any silty surface runoff during storm events;</li> <li>▪ On-site drainage system shall be installed prior to the commencement of other construction activities. Sediment traps shall be</li> </ul>	Work site / during construction	Contractor		√			ProPECC PN 1/94; WPCO (TM-DSS)

	<p>installed in order to minimise the sediment loading of the effluent prior to discharge;</p> <ul style="list-style-type: none"> <li>▪ All temporary and permanent drainage pipes and culverts provided to facilitate runoff discharge shall be adequately designed for the controlled release of storm flows. All sediment control measures shall be regularly inspected and maintained to ensure proper and efficient operation at all times and particularly following rain storms.</li> <li>▪ The temporarily diverted drainage shall be reinstated to its original condition when the construction work is finished or the temporary diversion is no longer required.</li> <li>▪ All fuel tanks and store areas shall be provided with locks and be sited on sealed areas, within bunds of a capacity equal to 110% of the storage capacity.</li> <li>▪ Minimum distances of 100 m shall be maintained between the storm water discharges and the existing or planned WSD flushing water intakes during construction phase.</li> </ul>						
S5.8	<p><i>Sewage from Construction Work Force</i>                  Construction work force sewage discharges on site shall be connected to the existing trunk sewer or sewage treatment facilities. The construction sewage shall be handled by portable chemical toilets prior to the commission of the on-site sewer system. Appropriate numbers of portable toilets shall be provided by a licensed contractor to serve the large number of construction workers over the construction site. The Contractor shall also be responsible for waste disposal and maintenance practices.</p>	Work site / during construction	Contractor		√		ProPECC PN 1/94; WPCO (TM-DSS)

S5.8	<i>Floating Debris and Refuse</i> Collection and removal of floating refuse shall be performed at regular intervals on a daily basis. The contractor shall be responsible for keeping the water within the site boundary and the neighbouring water free from rubbish.	Work site and adjacent water / During the construction period.	Contractor		√			WPCO
S5.8	<i>Storm Water Discharges</i> Minimum distances of 100 m shall be maintained between the existing or planned stormwater discharges and the existing or planned WSD flushing water intakes.	Work site and adjacent water / During the design and construction period.	Contractor	√	√			WPCO

- Des - Design, C - Construction, O – Operation, and Dec – Decommissioning

**Table A13.4 Implementation Schedule for Waste Management**

EIA Ref	Environmental Protection Measures / Mitigation Measures	Location / Timing	Implementation Agent	Implementation stage				Relevant Legislation and Guidelines
				Des	C	O	Dec	
<b>Construction Phase</b>								
<i>For the Whole Project</i>								
S6.7.7	<p><i>Good Site Practices</i> Recommendations for good site practices during the construction activities include:</p> <ul style="list-style-type: none"> <li>▪ nomination of an approved person, such as a site manager, to be responsible for good site practices, arrangements for collection and effective disposal to an appropriate facility, of all wastes generated at the site;</li> <li>▪ training of site personnel in proper waste management and chemical waste handling procedures;</li> <li>▪ provision of sufficient waste disposal points and regular collection for disposal;</li> <li>▪ appropriate measures to minimise windblown litter and dust during transportation of waste by either covering trucks or by transporting wastes in enclosed containers;</li> <li>▪ regular cleaning and maintenance programme for drainage systems, sumps and oil interceptors; and</li> <li>▪ a recording system for the amount of wastes generated, recycled and disposed of (including the disposal sites).</li> </ul>	Work site / During planning and design stage, and construction stage	Contractor		√			
S.6.7.8	<p><i>Waste Reduction Measures</i> Recommendations to achieve waste reduction include:</p> <ul style="list-style-type: none"> <li>• Sort C&amp;D waste from demolition of the existing waterfront structures to recover</li> </ul>	Work site / During planning and design stage, and construction stage	Contractor	√	√			

	<p>recyclable portions such as metals.</p> <ul style="list-style-type: none"> <li>• Segregation and storage of different types of waste in different containers, skips or stockpiles to enhance reuse or recycling of materials and their proper disposal.</li> <li>• Encourage collection of aluminium cans, PET bottles and paper by providing separate labelled bins to enable these wastes to be segregated from other general refuse generated by the work force.</li> <li>• Any unused chemicals or those with remaining functional capacity shall be recycled.</li> <li>• Use of reusable non-timber formwork, such as in casting the tunnel box sections, to reduce the amount of C&amp;D material.</li> <li>• Proper storage and site practices to minimise the potential for damage or contamination of construction materials.</li> <li>• Plan and stock construction materials carefully to minimise amount of waste generated and avoid unnecessary generation of waste.</li> </ul>						
<p>S6.7.10</p>	<p><i>General Refuse</i>                  General refuse shall be stored in enclosed bins or compaction units separate from C&amp;D material. A licensed waste collector shall be employed by the contractor to remove general refuse from the site, separately from C&amp;D material.</p> <p>A collection area shall be provided where wastes can be stored and loaded prior to removal from site. An enclosed and covered area is recommended to reduce the occurrence of 'wind blow' light material.</p>	<p>Work site / During the construction period</p>	<p>Contractor</p>		<p>√</p>		<p>Public Health and Municipal Services Ordinance (Cap. 132)</p>

S6.7.11	<p><i>Chemical Wastes</i> After use, chemical wastes (for example, cleaning fluids, solvents, lubrication oil and fuel) shall be handled according to the Code of Practice on the Packaging, Labelling and Storage of Chemical Wastes. Spent chemicals shall be collected by a licensed collector for disposal at the CWTF or other licensed facility in accordance with the Waste Disposal (Chemical Waste) (General) Regulation.</p>	Work site / During the construction period	Contractor		√			Waste Disposal (Chemical Waste) (General) Regulation Code of Practice on the Packaging, Labelling and Storage of Chemical Wastes
S6.7.12 – S6.7.13	<p><i>Construction and Demolition Material</i> C&amp;D material shall be sorted on-site into inert C&amp;D material (that is, public fill) and C&amp;D waste. All the suitable inert C&amp;D material shall be broken down to 250 mm in size for reuse as public fill in the WDII reclamation. C&amp;D waste, such as wood, glass, plastic, steel and other metals shall be reused or recycled and, as a last resort, disposed of to landfill. A suitable area shall be designated to facilitate the sorting process and a temporary stockpiling area will be required for the separated materials.</p> <p>In order to monitor the disposal of public fill and C&amp;D waste at public fill reception facilities and landfills, respectively, and to control fly tipping, a trip-ticket system shall be included as one of the contractual requirements and implemented by the Environmental Team undertaking the environmental monitoring and audit work. An Independent Environment Checker shall be responsible for auditing the results of the system.</p>	Work site / During the construction period	Contractor and Independent Environmental Checker		√			DEVB TCW No.6/2010; ETWB TCW No. 33/2002; ETWB TCW No. 19/2005
S6.7.14	<p><i>Bentonite Slurry</i> The disposal of residual used bentonite slurry shall follow the good practice guidelines stated</p>	Work site / During the construction period	Contractor		√			ProPECC PN 1/94

	<p>in ProPECC PN 1/94 “Construction Site Drainage” and listed as follows:</p> <ul style="list-style-type: none"> <li>▪ If the disposal of a certain residual quantity cannot be avoided, the used slurry may be disposed of at the marine spoil grounds subject to obtaining a marine dumping licence from EPD on a case-by-case basis.</li> <li>▪ If the used bentonite slurry is intended to be disposed of through the public drainage system, it shall be treated to the respective effluent standards applicable to foul sewers, storm drains or the receiving waters as set out in the Technical Memorandum of Standards for Effluents Discharged into Drainage and Sewerage Systems, Inland and Coastal Waters.</li> <li>▪ If the used bentonite slurry is intended to be disposed to public fill reception facilities, it will be mixed with dry soil on site before disposal.</li> </ul>							
--	---	--	--	--	--	--	--	--

- Des - Design, C - Construction, O – Operation, and Dec – Decommissioning

**Table A13.7 Implementation Schedule for Landscape and Visual**

EIA Ref	Environmental Protection Measures / Mitigation Measures	Location / Timing	Implementation Agent	Implementation stage				Relevant Legislation and Guidelines
				Des	C	O	Dec	
<b>Construction Phase</b>								
<b><i>For the Whole Project</i></b>								
Table 10.5	CM1 Topsoil, where identified, shall be stripped and stored for re-use in the construction of the soft landscape works, where practical.	Work site / During Construction Phase	Contractor	√	√			EIAO TM
Table 10.5	CM2 Existing trees to be retained on site shall be carefully protected during construction.	Work site / During Construction Phase	Contractor	√	√			EIAO TM
Table 10.5	CM3 Trees unavoidably affected by the works shall be transplanted where practical.	Work site / During Construction Phase	Contractor	√	√			EIAO TM
Table 10.5	CM4 Compensatory tree planting shall be provided to compensate for felled trees.	Work site / During Construction Phase	Contractor	√	√			EIAO TM
Table 10.5	CM5 Control of night-time lighting.	Work site / During Construction Phase	Contractor		√			EIAO TM
Table 10.5	CM6 Erection of decorative screen hoarding compatible with the surrounding setting.	Work site / During Construction Phase	Contractor		√			EIAO TM
<b><i>For DP2 – WDII Major Roads (Road P2)</i></b>								
Table 10.5	CM1 Topsoil, where identified, shall be stripped and stored for re-use in the construction of the soft landscape works, where practical.	Work site / During Construction Phase	Contractor	√	√			EIAO TM
Table 10.5	CM2 Existing trees to be retained on site shall be carefully protected during construction.	Work site / During Construction Phase	Contractor	√	√			EIAO TM
Table 10.5	CM3 Trees unavoidably affected by the works shall be transplanted where practical.	Work site / During Construction Phase	Contractor	√	√			EIAO TM
Table 10.5	CM4 Compensatory tree planting shall be provided to compensate for felled trees.	Work site / During Construction Phase	Contractor	√	√			EIAO TM
Table 10.5	CM5 Control of night-time lighting.	Work site / During Construction Phase	Contractor		√			EIAO TM
Table 10.5	CM6 Erection of decorative screen hoarding compatible with the surrounding setting.	Work site / During Construction Phase	Contractor		√			EIAO TM



Operation Phase							
<i>For DP2 – WDII Major Roads (Road P2)</i>							
Table 10.6, Figure 10.5.1-10.5.5	OM1 Aesthetic design of buildings and road-related structures, including viaducts, vent buildings, subways, footbridges and noise barriers and enclosure.	Work site / During Design Stage and Operation Phases	CEDD/HyD		√	√	ETWB TCW 2/2004
Table 10.6, Figure 10.5.1-10.5.5	OM3 Buffer Tree and Shrub Planting to screen proposed roads and associated structures.	Work site / During Design Stage and Operation Phases	CEDD/HyD		√	√	ETWB TCW 2/2004
Table 10.6, Figure 10.5.1-10.5.5	OM5 Aesthetic streetscape design.	Work site / During Design Stage and Operation Phases	CEDD/HyD		√	√	ETWB TCW 2/2004
Table 10.6, Figure 10.5.1-10.5.5	OM6 Aesthetic design of roadside amenity areas	Work site / During Design Stage and Operation Phases	CEDD/HyD		√	√	ETWB TCW 2/2004

- Des - Design, C - Construction, O – Operation, and Dec – Decommissioning



***Appendix 4.1***

***Action and Limit Level***



**Action and Limit Level**

***Action and Limit Level for Noise Monitoring***

<b>Time Period</b>	<b>Action Level</b>	<b>Limit Level</b>
07:00 - 19:00 hours on normal weekdays	When one documented complaint is received.	75 dB(A)

*Notes: If works are to be carried out during restricted hours, the conditions stipulated in the Construction Noise Permit (CNP) issued by the Noise Control Authority have to be followed.  
\*The Limit level shall be 70 dB(A) and 65 dB(A) for educational institute during normal teaching periods and school examination periods, respectively.*

***Action and Limit Level for Air Monitoring***

<b>Monitoring Locations</b>	<b>1-hour TSP Level in <math>\mu\text{g}/\text{m}^3</math></b>		<b>24-hour TSP Level in <math>\mu\text{g}/\text{m}^3</math></b>	
	Action Level	Limit Level	Action Level	Limit Level
<b>CMA5b</b> Pedestrian Plaza	339.7	500	209.9	260
<b>CMA6a</b> WDII PRE Site Office	333.0	500	207.1	260



***Appendix 5.1***

***Monitoring Schedules for Reporting Month and Coming Reporting Month***

**Contract No. HK/2015/01**  
**Wan Chai Development Phase II and Central-Wan Chai Bypass**  
**Sampling, Field Measurement and Testing Works (Stage 3)**

**Environmental Monitoring Schedule**  
**July 2019**

Sunday	Monday	Tuesday	Wednesday	Thursday	Friday	Saturday
				27-Jun	28-Jun	29-Jun
		Weekly Environmental Site Audit				
30-Jun	01-Jul	02-Jul	03-Jul	04-Jul	05-Jul	06-Jul
		Weekly Environmental Site Audit				
07-Jul	08-Jul	09-Jul	10-Jul	11-Jul	12-Jul	13-Jul
		Weekly Environmental Site Audit				
14-Jul	15-Jul	16-Jul	17-Jul	18-Jul	19-Jul	20-Jul
		Weekly Environmental Site Audit				
21-Jul	22-Jul	23-Jul	24-Jul	25-Jul	26-Jul	27-Jul
		Weekly Environmental Site Audit				

Contract No. HK/2015/01  
Wan Chai Development Phase II and Central-Wan Chai Bypass  
Sampling, Field Measurement and Testing Works (Stage 3)

**Tentative Environmental Monitoring Schedule  
August 2019**

Sunday	Monday	Tuesday	Wednesday	Thursday	Friday	Saturday
28-Jul	29-Jul	30-Jul Weekly Environmental Site Audit	31-Jul	01-Aug	02-Aug	03-Aug
04-Aug	05-Aug	06-Aug Weekly Environmental Site Audit	07-Aug	08-Aug	09-Aug	10-Aug
11-Aug	12-Aug	13-Aug Weekly Environmental Site Audit	14-Aug	15-Aug	16-Aug	17-Aug
18-Aug	19-Aug	20-Aug Weekly Environmental Site Audit	21-Aug	22-Aug	23-Aug	24-Aug
25-Aug	26-Aug	27-Aug Weekly Environmental Site Audit	28-Aug	29-Aug	30-Aug	31-Aug



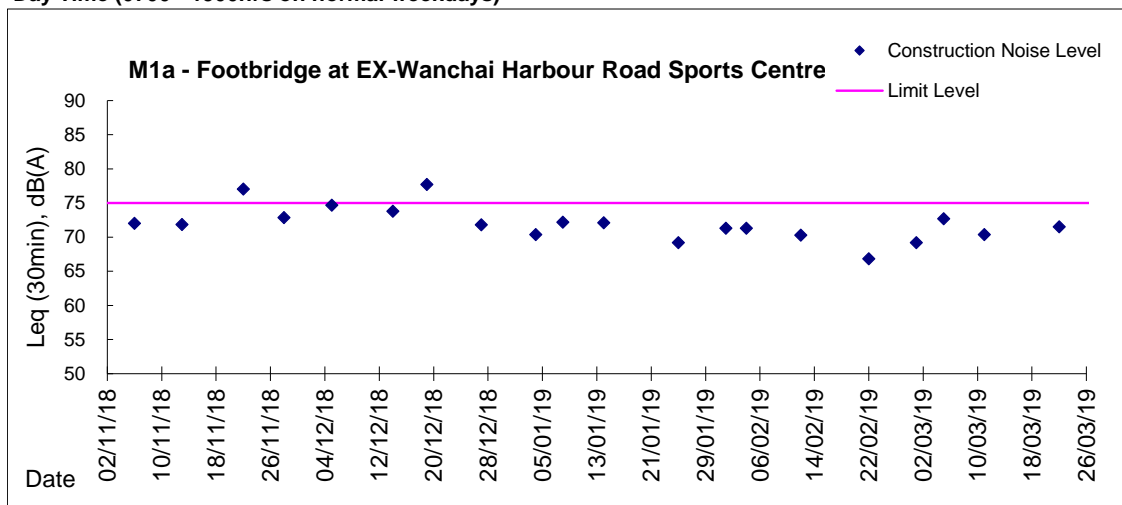
***Appendix 5.2***

***Noise Monitoring Results and Graphical Presentations***



Graphic Presentation of Noise Monitoring Result

Day Time (0700 - 1900hrs on normal weekdays)





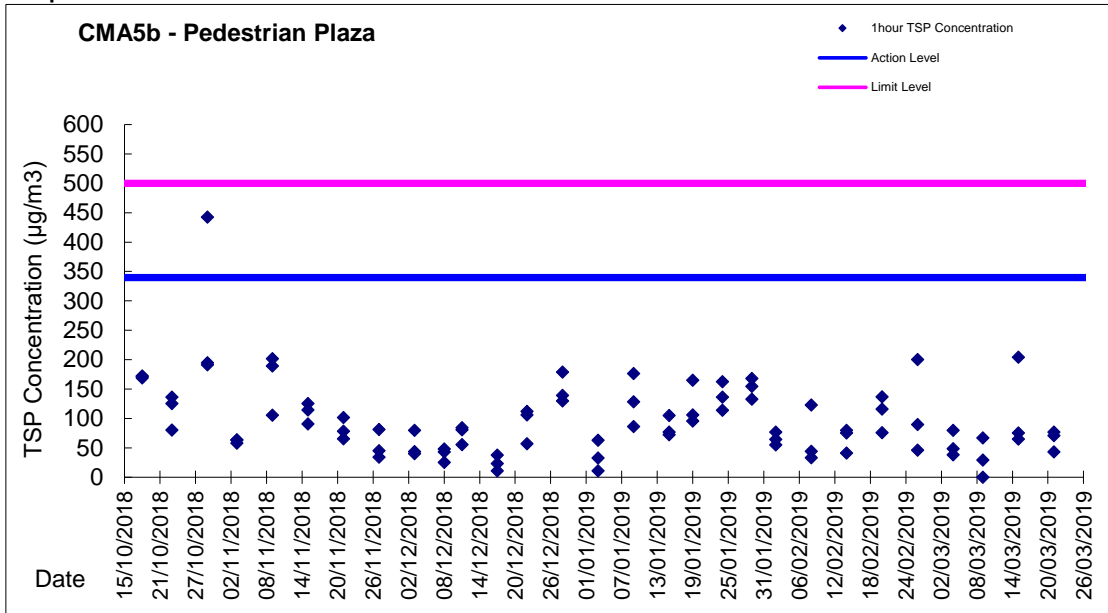


***Appendix 5.3***

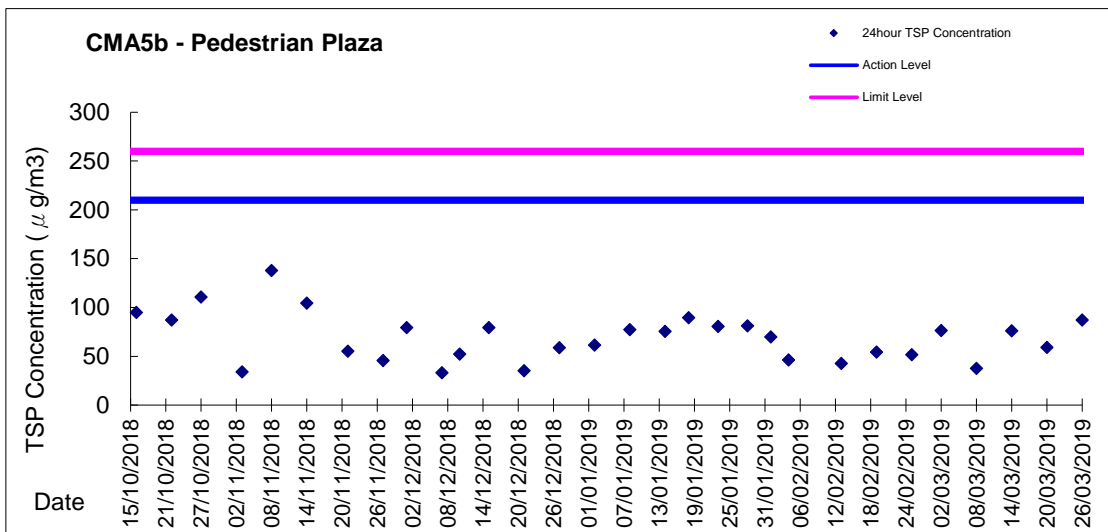
***Air Quality Monitoring Results and Graphical Presentations***



Graphic Presentation of 1 hour TSP Result for EP-376/2009

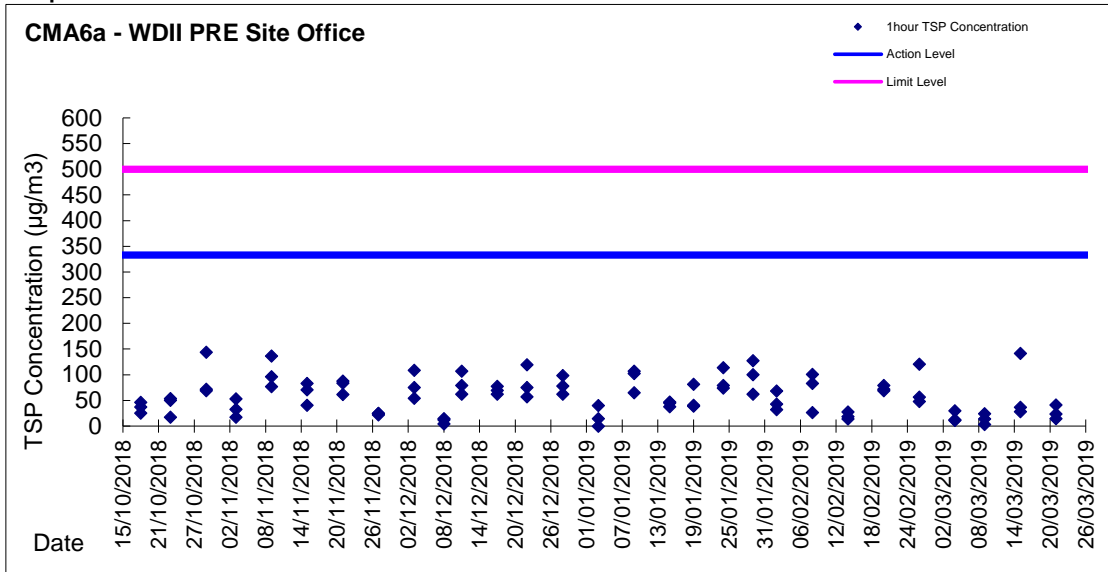


Graphic Presentation of 24 hour TSP Result for EP-376/2009

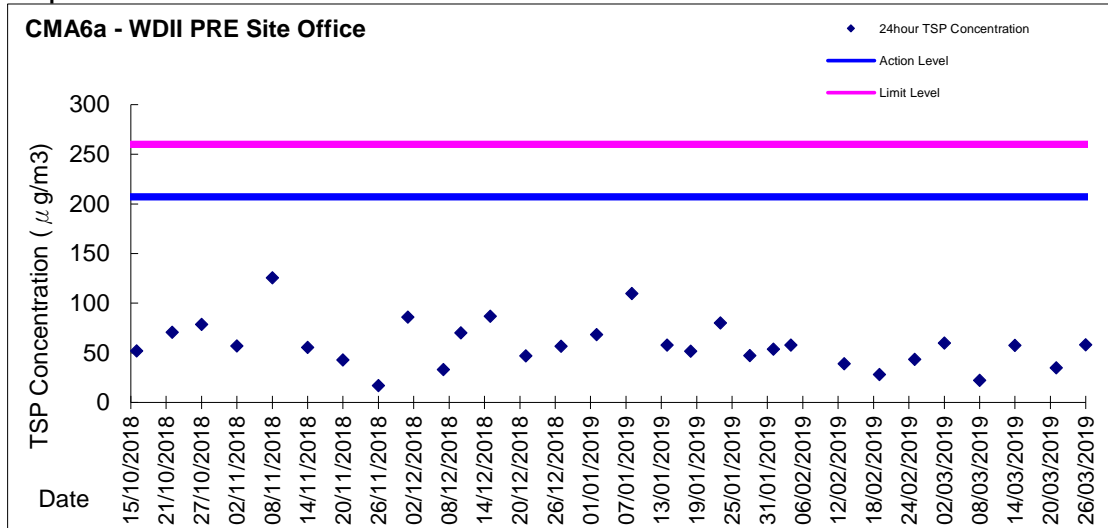




Graphic Presentation of 1 hour TSP Result for EP-376/2009



Graphic Presentation of 24 hour TSP Result for EP-376/2009





***Appendix 6.1***

***Event Action Plans***



Event/Action Plan for Construction Noise

EVENT	ACTION			
	ET	IEC	ER	CONTRACTOR
Action Level being exceeded	<ol style="list-style-type: none"><li>1. Notify ER, IEC and Contractor;</li><li>2. Carry out investigation;</li><li>3. Report the results of investigation to the IEC, ER and Contractor;</li><li>4. Discuss with the IEC and Contractor on remedial measures required;</li><li>5. Increase monitoring frequency to check mitigation effectiveness.</li></ol> <p>(The above actions should be taken within 2 working days after the exceedance is identified)</p>	<ol style="list-style-type: none"><li>1. Review the investigation results submitted by the ET;</li><li>2. Review the proposed remedial measures by the Contractor and advise the ER accordingly;</li><li>3. Advise the ER on the effectiveness of the proposed remedial measures.</li></ol> <p>(The above actions should be taken within 2 working days after the exceedance is identified)</p>	<ol style="list-style-type: none"><li>1. Confirm receipt of notification of failure in writing;</li><li>2. Notify Contractor;</li><li>3. In consolidation with the IEC, agree with the Contractor on the remedial measures to be implemented;</li><li>4. Supervise the implementation of remedial measures.</li></ol> <p>(The above actions should be taken within 2 working days after the exceedance is identified)</p>	<ol style="list-style-type: none"><li>1. Submit noise mitigation proposals to IEC and ER;</li><li>2. Implement noise mitigation proposals.</li></ol> <p>(The above actions should be taken within 2 working days after the exceedance is identified)</p>



EVENT	ACTION			
	ET	IEC	ER	CONTRACTOR
Limit Level being exceeded	<ol style="list-style-type: none"> <li>1. Inform IEC, ER, Contractor and EPD;</li> <li>2. Repeat measurements to confirm findings;</li> <li>3. Increase monitoring frequency;</li> <li>4. Identify source and investigate the cause of exceedance;</li> <li>5. Carry out analysis of Contractor's working procedures;</li> <li>6. Discuss with the IEC, Contractor and ER on remedial measures required;</li> <li>7. Assess effectiveness of Contractor's remedial actions and keep IEC, EPD and ER informed of the results;</li> <li>8. If exceedance stops, cease additional monitoring. (The above actions should be taken within 2 working days after the exceedance is identified)</li> </ol>	<ol style="list-style-type: none"> <li>1. Discuss amongst ER, ET, and Contractor on the potential remedial actions;</li> <li>2. Review Contractor's remedial actions whenever necessary to assure their effectiveness and advise the ER accordingly. (The above actions should be taken within 2 working days after the exceedance is identified)</li> </ol>	<ol style="list-style-type: none"> <li>1. Confirm receipt of notification of failure in writing;</li> <li>2. Notify Contractor;</li> <li>3. In consolidation with the IEC, agree with the Contractor on the remedial measures to be implemented;</li> <li>4. Supervise the implementation of remedial measures;</li> <li>5. If exceedance continues, consider stopping the Contractor to continue working on that portion of work which causes the exceedance until the exceedance is abated. (The above actions should be taken within 2 working days after the exceedance is identified)</li> </ol>	<ol style="list-style-type: none"> <li>1. Take immediate action to avoid further exceedance;</li> <li>2. Submit proposals for remedial actions to IEC and ER within 3 working days of notification;</li> <li>3. Implement the agreed proposals;</li> <li>4. Submit further proposal if problem still not under control;</li> <li>5. Stop the relevant portion of works as instructed by the ER until the exceedance is abated. (The above actions should be taken within 2 working days after the exceedance is identified)</li> </ol>



**Event / Action Plan for Construction Air Quality**

EVENT	ACTION			
	ET	IEC	ER	CONTRACTOR
<b>ACTION LEVEL</b>				
1. Exceedance for one sample	<ol style="list-style-type: none"> <li>Identify source, investigate the causes of exceedance and propose remedial measures;</li> <li>Inform IEC and ER;</li> <li>Repeat measurement to confirm finding;</li> <li>Increase monitoring frequency to daily.</li> </ol> (The above actions should be taken within 2 working days after the exceedance is identified)	<ol style="list-style-type: none"> <li>Check monitoring data submitted by ET;</li> <li>Check Contractor's working method.</li> </ol> (The above actions should be taken within 2 working days after the exceedance is identified)	<ol style="list-style-type: none"> <li>Notify Contractor.</li> </ol> (The above actions should be taken within 2 working days after the exceedance is identified)	<ol style="list-style-type: none"> <li>Rectify any unacceptable practice;</li> <li>Amend working methods if appropriate.</li> </ol> (The above actions should be taken within 2 working days after the exceedance is identified)
2. Exceedance for two or more consecutive samples	<ol style="list-style-type: none"> <li>Identify source;</li> <li>Inform IEC and ER;</li> <li>Advise the ER on the effectiveness of the proposed remedial measures;</li> <li>Repeat measurements to confirm findings;</li> <li>Increase monitoring frequency to daily;</li> <li>Discuss with IEC and Contractor on remedial actions required;</li> <li>If exceedance continues, arrange meeting with IEC and ER;</li> <li>If exceedance stops, cease additional monitoring.</li> </ol> (The above actions should be taken within 2 working days after the exceedance is identified)	<ol style="list-style-type: none"> <li>Check monitoring data submitted by ET;</li> <li>Check Contractor's working method;</li> <li>Discuss with ET and Contractor on possible remedial measures;</li> <li>Advise the ET on the effectiveness of the proposed remedial measures;</li> <li>Supervise Implementation of remedial measures.</li> </ol> (The above actions should be taken within 2 working days after the exceedance is identified)	<ol style="list-style-type: none"> <li>Confirm receipt of notification of failure in writing;</li> <li>Notify Contractor;</li> <li>Ensure remedial measures properly implemented.</li> </ol> (The above actions should be taken within 2 working days after the exceedance is identified)	<ol style="list-style-type: none"> <li>Submit proposals for remedial to ER within 3 working days of notification;</li> <li>Implement the agreed proposals;</li> <li>Amend proposal if appropriate.</li> </ol> (The above actions should be taken within 2 working days after the exceedance is identified)
<b>LIMIT LEVEL</b>				
1. Exceedance for one sample	<ol style="list-style-type: none"> <li>Identify source, investigate the causes of exceedance and propose remedial measures;</li> <li>Inform ER, Contractor and EPD;</li> <li>Repeat measurement to confirm finding;</li> <li>Increase monitoring frequency to daily;</li> <li>Assess effectiveness of Contractor's remedial actions and keep IEC, EPD and ER informed of the results.</li> </ol> (The above actions should be taken within 2 working days after the exceedance is identified)	<ol style="list-style-type: none"> <li>Check monitoring data submitted by ET;</li> <li>Check Contractor's working method;</li> <li>Discuss with ET and Contractor on possible remedial measures;</li> <li>Advise the ER on the effectiveness of the proposed remedial measures;</li> <li>Supervise implementation of remedial measures.</li> </ol> (The above actions should be taken within 2 working days after the exceedance is identified)	<ol style="list-style-type: none"> <li>Confirm receipt of notification of failure in writing;</li> <li>Notify Contractor;</li> <li>Ensure remedial measures properly implemented.</li> </ol> (The above actions should be taken within 2 working days after the exceedance is identified)	<ol style="list-style-type: none"> <li>Take immediate action to avoid further exceedance;</li> <li>Submit proposals for remedial actions to IEC within 3 working days of notification;</li> <li>Implement the agreed proposals;</li> <li>Amend proposal if appropriate.</li> </ol> (The above actions should be taken within 2 working days after the exceedance is identified)
2. Exceedance for two or more consecutive samples	<ol style="list-style-type: none"> <li>Notify IEC, ER, Contractor and EPD;</li> <li>Identify source;</li> <li>Repeat measurement to confirm findings;</li> <li>Increase monitoring frequency to daily;</li> <li>Carry out analysis of Contractor's working procedures to determine possible mitigation to be implemented;</li> <li>Arrange meeting with IEC and ER to discuss the remedial actions to be taken;</li> <li>Assess effectiveness of Contractor's remedial actions and keep IEC, EPD and ER informed of the results;</li> <li>If exceedance stops, cease additional monitoring.</li> </ol> (The above actions should be taken within 2 working days after the exceedance is identified)	<ol style="list-style-type: none"> <li>Discuss amongst ER, ET, and Contractor on the potential remedial actions;</li> <li>Review Contractor's remedial actions whenever necessary to assure their effectiveness and advise the ER accordingly;</li> <li>Supervise the implementation of remedial measures.</li> </ol>	<ol style="list-style-type: none"> <li>Confirm receipt of notification of failure in writing;</li> <li>Notify Contractor;</li> <li>In consolidation with the IEC, agree with the Contractor on the remedial measures to be implemented;</li> <li>Ensure remedial measures properly implemented;</li> <li>If exceedance continues, consider what portion of the work is responsible and instruct the Contractor to stop that portion of work until the exceedance is abated.</li> </ol> (The above actions should be taken within 2 working days after the exceedance is identified)	<ol style="list-style-type: none"> <li>Take immediate action to avoid further exceedance;</li> <li>Submit proposals for remedial actions to IEC within 3 working days of notification;</li> <li>Implement the agreed proposals;</li> <li>Resubmit proposals if problem still not under control;</li> <li>Stop the relevant portion of works as determined by the ER until the exceedance is abated. (The above actions should be taken within 2 working days after the exceedance is identified)</li> </ol>



**Event and Action Plan for Marine Water Quality**

EVENT	ACTION			
	ET	IEC	ER	CONTRACTOR
Action level being exceeded by one sampling day	Repeat in-situ measurement to confirm findings; Identify source(s) of impact; Inform IEC and Contractor; Check monitoring data, all plant, equipment and Contractor's working methods; Discuss mitigation measures with IEC and Contractor; (The above actions should be taken within 1 working day after the exceedance is identified) Repeat measurement on next day of exceedance.	Discuss with ET and Contractor on the mitigation measures; Review proposals on mitigation measures submitted by Contractor and advise the ER accordingly; Assess the effectiveness of the implemented mitigation measures. (The above actions should be taken within 1 working day after the exceedance is identified)	Discuss with IEC on the proposed mitigation measures; Make agreement on the mitigation measures to be implemented. (The above actions should be taken within 1 working day after the exceedance is identified)	Inform the ER and confirm notification of the non-compliance in writing; Rectify unacceptable practice; Check all plant and equipment; Consider changes of working methods; Discuss with ET and IEC and propose mitigation measures to IEC and ER; Implement the agreed mitigation measures. (The above actions should be taken within 1 working day after the exceedance is identified)
Action level being exceeded by more than one consecutive sampling days	Identify source(s) of impact; Inform IEC and Contractor; Check monitoring data, all plant, equipment and Contractor's working methods; Discuss mitigation measures with IEC and Contractor; Ensure mitigation measures are implemented; Prepare to increase the monitoring frequency to daily; (The above actions should be taken within 1 working day after the exceedance is identified) Repeat measurement on next working day of exceedance.	Discuss with ET and Contractor on the mitigation measures; Review proposals on mitigation measures submitted by Contractor and advise the ER accordingly; Assess the effectiveness of the implemented mitigation measures. (The above actions should be taken within 1 working day after the exceedance is identified)	Discuss with IEC on the proposed mitigation measures; Make agreement on the mitigation measures to be implemented; Assess the effectiveness of the implemented mitigation measures. (The above actions should be taken within 1 working day after the exceedance is identified)	Inform the Engineer and confirm notification of the non-compliance in writing; Rectify unacceptable practice; Check all plant and equipment; Consider changes of working methods; Discuss with ET and IEC and propose mitigation measures to IEC and ER within 3 working days; Implement the agreed mitigation measures. (The above actions should be taken within 1 working day after the exceedance is identified)





EVENT	ACTION			
	ET	IEC	ER	CONTRACTOR
Limit level being exceeded by one sampling day	<p>Repeat in-situ measurement to confirm findings;            Identify source(s) of impact; Inform IEC, contractor and EPD;            Check monitoring data, all plant, equipment and Contractor's working methods;            Discuss mitigation measures with IEC, ER and Contractor; Ensure mitigation measures are implemented;            Increase the monitoring frequency to daily until no exceedance of Limit level.            (The above actions should be taken within 1 working day after the exceedance is identified)</p>	<p>Discuss with ET and Contractor on the mitigation measures;            Review proposals on mitigation measures submitted by Contractor and advise the ER accordingly;            Assess the effectiveness of the implemented mitigation measures.            (The above actions should be taken within 1 working day after the exceedance is identified)</p>	<p>Discuss with IEC, ET and Contractor on the proposed mitigation measures;            Request Contractor to critically review the working methods;            Make agreement on the mitigation measures to be implemented;            Assess the effectiveness of the implemented mitigation measures.            (The above actions should be taken within 1 working day after the exceedance is identified)</p>	<p>Inform the Engineer and confirm notification of the non-compliance in writing;            Rectify unacceptable practice;            Check all plant and equipment;            Consider changes of working methods;            Discuss with ET , IEC and ER and propose mitigation measures to IEC and ER within 3 working days;            Implement the agreed mitigation measures.            (The above actions should be taken within 1 working day after the exceedance is identified)</p>
Limit level being exceeded by more than one consecutive sampling days	<p>Identify source(s) of impact; Inform IEC, contractor and EPD;            Check monitoring data, all plant, equipment and Contractor's working methods;            Discuss mitigation measures with IEC, ER and Contractor;            Ensure mitigation measures are implemented;            Increase the monitoring frequency to daily until no exceedance of Limit level for two consecutive days.            (The above actions should be taken within 1 working day after the exceedance is identified)</p>	<p>Discuss with ET and Contractor on the mitigation measures;            Review proposals on mitigation measures submitted by Contractor and advise the ER accordingly;            Assess the effectiveness of the implemented mitigation measures.            (The above actions should be taken within 1 working day after the exceedance is identified)</p>	<p>Discuss with IEC, ET and Contractor on the proposed mitigation measures;            Request Contractor to critically review the working methods;            Make agreement on the mitigation measures to be implemented;            Assess the effectiveness of the implemented mitigation measures;            Consider and instruct, if necessary, the Contractor to slow down or to stop all or part of the marine work until no exceedance of Limit level.            (The above actions should be taken within 1 working day after the exceedance is identified)</p>	<p>Inform the ER and confirm notification of the non-compliance in writing;            Rectify unacceptable practice;            Check all plant and equipment;            Consider changes of working methods;            Discuss with ET, IEC and ER and propose mitigation measures to IEC and ER within 3working days;            Implement the agreed mitigation measures;            As directed by the Engineer, to slow down or to stop all or part of the marine work or construction activities.            (The above actions should be taken within 1 working day after the exceedance is identified)</p>



**Event and Action Plan for Odour Patrol**

Event	ACTION	
	Person-in-charge of Odour Monitoring	Implementation Agent Identified by CEDD
<b>Action Level</b>		
Exceedance of Action Level	1. Identify source/reason of exceedance; 2. Repeat odour patrol to confirm finding.	1. Carry out investigation to identify the source/reason of exceedance; 2. Rectify any unacceptable practice 3. Implement more mitigation measures if necessary; 4. Inform EPD or MD if exceedance is considered to be caused by expedient connections or floating debris.
<b>Limit Level</b>		
Exceedance of Limit Level	1. Identify source / reason of exceedance; 2. Repeat odour patrol to confirm findings; 3. Increase odour patrol frequency; 4. If exceedance stops, cease additional odour patrol.	1. Carry out investigation to identify the source/reason of exceedance. Investigation shall be completed within 2 weeks; 2. Rectify any unacceptable practice; 3. Formulate remedial actions; 4. Ensure remedial actions properly implemented; 5. If exceedance continues, consider what more/enhanced mitigation measures shall be implemented; 6. Inform EPD or MD if exceedance is considered to be caused by expedient connections or floating debris.



***Appendix 6.2***

***Summary for Notification of Exceedance***



Lam Geotechnics Limited

Contract No. HK/2015/01  
Wanchai Development Phase II and Central Wanchai Bypass  
Sampling, Field Measurement and Testing Work (Stage3)  
Summary for Notification of Exceedance

Ref no.	Date	Location	Parameters (Unit)	Measured	Action Level	Limit Level	Follow-up action
-	-	-	-	-	-	-	-



***Appendix 9.1***

***Complaint Log***



***Environmental Complaints Log***

<b>Complaint Log No.</b>	<b>Date of Complaint</b>	<b>Received From and Received By</b>	<b>Location of Complainant</b>	<b>Nature of Complaint</b>	<b>Outcome</b>	<b>Status</b>
--	--	--	--	--	--	--



***Appendix 10.1***

***Construction Programme of Individual Contracts***

**CEDD Contract No. HK/2012/08  
Wan Chai Development Phase II  
Central - Wan Chai Bypass at Wan Chai West**

Activity ID	Activity Name	Remaining Dur	Early Start	Early Finish	Activity % Complete	2018												2019								
						Jan	Feb	Mar	Apr	May	Jun	Jul	Aug	Sep	Oct	Nov	Dec	Jan	Feb	Mar	Apr	May	Jun	Jul	Aug	Sep
<b>HK/2012/08 Revised Works Programme Rev.12.0(DD 20 November 2017)</b>																										
<b>Key Dates and Milestone Dates</b>																										
<b>Sections of Works Completion (Included Not Granted EOT Entitlement of The Contractor)</b>																										
KD10840	Completion of Section IIIA	0		08-Sep-18*	0%																					
KD10860	Completion of Section IV	0		30-Aug-18*	0%																					
KD10880	Completion of Section V	0		26-Sep-18*	0%																					
KD11010	Completion of Section VII	0		14-Sep-18*	0%																					
KD11020	Completion of Section VIII	0		21-Sep-18*	0%																					
KD11040	Completion of Section IX	0		21-Sep-19*	0%																					
KD11060	Completion of Section X	0		21-Sep-18*	0%																					
<b>Planned Sections of Works Completion</b>																										
KD10080	Planned Section IIIA Completion - Road A2,A4, A5	0		08-Sep-18	0%																					
KD10100	Planned Section IV Completion - Slip Road 3	0		30-Aug-18	0%																					
KD10140	Planned Section V Completion - Remaining At-Grade Road	0		26-Sep-18	0%																					
KD10280	Planned Section VII Completion - Remainder Works	0		14-Sep-18	0%																					
KD10300	Planned Section VIII Completion - Landscape Softwork	0		21-Sep-18	0%																					
KD10320	Planned Section IX Completion - Establishment Works	0		21-Sep-19	0%																					
KD10340	Planned Section X Completion - Tree Protection & Preservation	0		21-Sep-18	0%																					
<b>Dredging and Reclamation</b>																										
<b>Marine Work Construction</b>																										
<b>Zone CRIII</b>																										
<b>Seawall Construction - Zone CRIII</b>																										
<b>Zone CRIII Seawall- 2nd Stage</b>																										
<b>Seawall 2 &amp; 12</b>																										
MAR21371	Zone CRIII - seawall 2 & 12 - Backfilling remaining portion (type A, geotextile and filter)	0	19-Jan-18 A	27-Jan-18 A	100%	■																				
<b>Zone D</b>																										
<b>Seawall Construction - Zone D</b>																										
<b>Seawall 10 &amp; 11</b>																										
MAR20630	Zone D - Seawall 10 & 11: Install remaining seawall block	14	20-Feb-18*	05-Mar-18	0%		■																			
MAR20650	Zone D - Seawall 10 & 11: Backfill Type A	7	06-Mar-18	12-Mar-18	0%			■																		
MAR20670	Zone D - Seawall 10 & 11: Lay geotextile and filter	7	13-Mar-18	19-Mar-18	0%			■																		
<b>Works for Section Completion</b>																										
<b>Construction</b>																										
<b>Section III A - Road A2, A4 &amp; A5</b>																										
<b>Roadwork &amp; Utilities - Section 1 (L1806 - L1801)</b>																										

Data Date: 20-Feb-18

- ◆ Current Milestone
- Actual Work
- Critical Remaining Work
- Remaining Work
- Remaining Level of Effort

**Updated Works Programme Rev.12  
(Ref. to Rev.12 as of 20 February 2018)**

Date	Revision	Checked	Approved
20-Feb-18	12		











**CEDD Contract No. HK/2012/08  
Wan Chai Development Phase II  
Central - Wan Chai Bypass at Wan Chai West**

Activity ID	Activity Name	Remaining Dur	Early Start	Early Finish	Activity % Complete	2018												2019					
						Jan	Feb	Mar	Apr	May	Jun	Jul	Aug	Sep	Oct	Nov	Dec	Jan	Feb	Mar	Apr	May	Jun
<b>Promenade Seawall Parapet Construction &amp; EVA</b>																							
SVII12000	Sec VII - Precast parapet	67	18-Nov-17 A	14-May-18	0%																		
SVII12010	Sec VII - Zone CRIII - seawall parapet: Backfilling	14	20-Feb-18	07-Mar-18	0%																		
SVII12120	Sec VII - Zone CRIII - seawall parapet: Construct mass concrete coping	30	08-Mar-18	16-Apr-18	0%																		
SVII12122	Sec VII - Zone CRIII - seawall parapet: reinforced concret coping	17	17-Apr-18	07-May-18	0%																		
SVII12140	Sec VII - Zone CRIII - seawall parapet: construct seawall parapet	30	08-May-18	12-Jun-18	0%																		
SVII12160	Sec VII - CRIII - EVA: watermain	14	13-Jun-18	29-Jun-18	0%																		
SVII12180	Sec VII - CRIII - EVA: U-channel	14	30-Jun-18	17-Jul-18	0%																		
SVII12200	Sec VII - CRIII - EVA: bituminous layer	5	18-Jul-18	23-Jul-18	0%																		
SVII12220	Sec VII - CRIII - EVA: paving block	30	24-Jul-18	27-Aug-18	0%																		
SVII13120	Sec VII - Zone A1, A2 & B - seawall parapet: Construct mass concrete coping	14	28-Dec-17 A	07-Mar-18	68.18%																		
SVII13122	Sec VII - Zone A1, A2 & B - seawall parapet: reinforced concrete coping	18	08-Mar-18	28-Mar-18	0%																		
SVII13140	Sec VII - Zone A1, A2 & B - seawall parapet: Construct seawall parapet	30	09-Apr-18	14-May-18	0%																		
SVII13160	Sec VII - Zone A1, A2 & B - EVA: watermain	14	15-May-18	31-May-18	0%																		
SVII13180	Sec VII - Zone A1, A2 & B - EVA: U-channel	14	01-Jun-18	16-Jun-18	0%																		
SVII13182	Sec VII - Zone A1, A2 & B - EVA: bituminous layer	5	19-Jun-18	23-Jun-18	0%																		
SVII13184	Sec VII - Zone A1, A2 & B - EVA: paving block	30	25-Jun-18	30-Jul-18	0%																		
SVII13200	Sec VII - Zone D - seawall parapet: Remove temporary seawall block	21	07-Mar-18	03-Apr-18	0%																		
SVII13220	Sec VII - Zone D - seawall parapet: Construct mass concrete	30	04-Apr-18	10-May-18	0%																		
SVII13222	Sec VII - Zone D - seawall parapet: reinforced concrete coping	18	11-May-18	01-Jun-18	0%																		
SVII13240	Sec VII - Zone D - seawall parapet: Construct seawall parapet	25	02-Jun-18	03-Jul-18	0%																		
SVII13260	Sec VII - Zone D - EVA : watermain	14	04-Jul-18	19-Jul-18	0%																		
SVII13280	Sec VII - Zone D - EVA : U-channel	14	20-Jul-18	04-Aug-18	0%																		
SVII13300	Sec VII - Zone D - EVA : bituminous layer	5	06-Aug-18	10-Aug-18	0%																		
SVII13320	Sec VII - Zone D - EVA : paving block	30	11-Aug-18	14-Sep-18	0%																		
<b>Promenade Footpath</b>																							
<b>Section 1</b>																							
SVII10440	Sec VII - section 1 footpath - drainage works : connection pipe & U -channel	10	24-May-18	04-Jun-18	0%																		
SVII10445	Sec VII - section 1 footpath - watermain	7	05-Jun-18	12-Jun-18	0%																		
SVII10460	Sec VII - section 1 footpath - lighting	7	13-Jun-18	21-Jun-18	0%																		
SVII10500	Sec VII - section 1 footpath - paving block	21	22-Jun-18	17-Jul-18	0%																		
<b>Section 2</b>																							
SVII12610	Sec VII - section 2 footpath - drainage works : L2202 - L2203A	20	20-Feb-18	14-Mar-18	0%																		
SVII12615	Sec VII - section 2 footpath - watermain	7	15-Mar-18	22-Mar-18	0%																		
SVII12630	Sec VII - section 2 footpath - utilities: TCSS	21	23-Mar-18	20-Apr-18	0%																		
SVII12670	Sec VII - section 2 footpath - paving block	30	21-Apr-18	28-May-18	0%																		
<b>Section 3</b>																							
SVII12850	Sec VII - section 3 footpath - watermain	17	20-Feb-18	10-Mar-18	0%																		
SVII12870	Sec VII - section 3 footpath - utilities (HEC, TCSS, HGC, PCCW)	40	12-Mar-18	02-May-18	0%																		
SVII12875	Sec VII - 3 footpath - drainage works :U chanel	14	03-May-18	18-May-18	0%																		

